

Installation Manual

Camera Interface for Land Rover(Bosch Head unit)

Compatible car model:

Including but not limited to Land Rover Evoque 2014-2016, Discovery 4 2012 later, Range Rover Sport/Range Rover 2012 later, Jaguar XJ/XJL/T-F)

Product disassembly and assembly process:

*NOTE: All the disassembly and assembly processes need to power off and do a good job of original vehicle protection measures to avoid damage to the original vehicle components.

1. Centre Console of the Land Rover(Bosch Head unit) (Picture 1), Remove the display panel of the screen, Remove four screws from the brackets on both sides of the screen (Picture 2) .

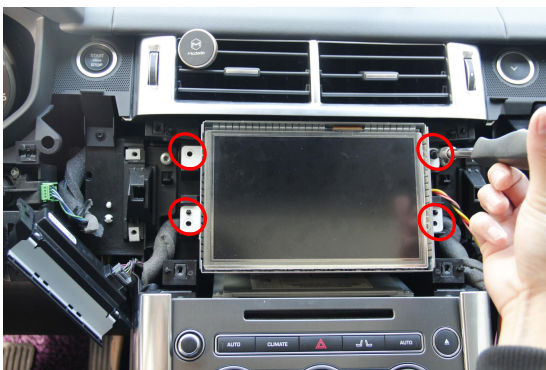


Picture 1

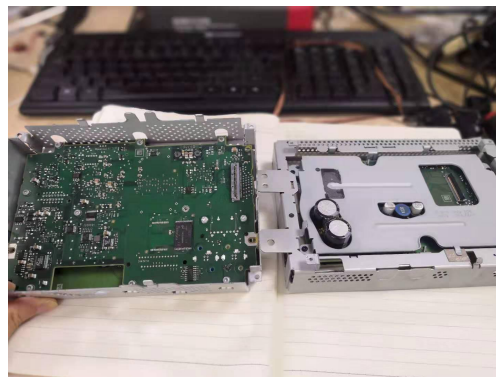


Picture 2

2. Remove four screws from the screen (Picture 3), Remove the screen and open it (Picture 4) .

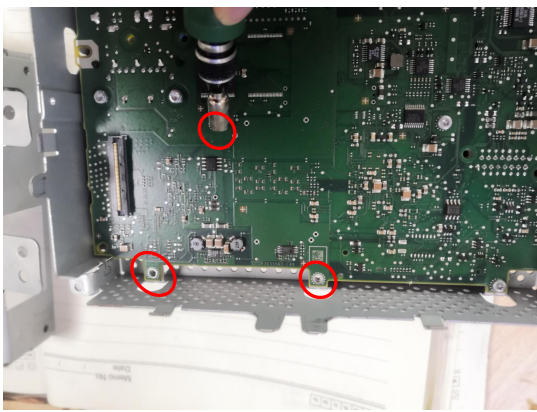


Picture 3

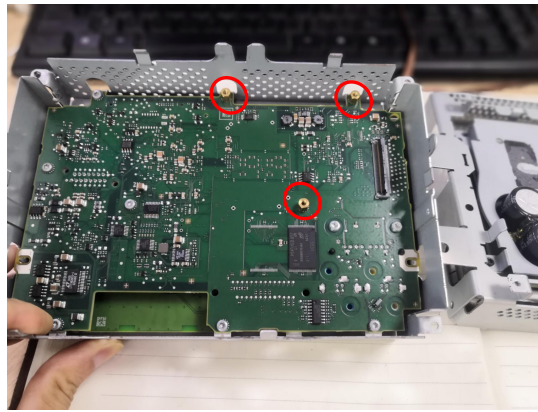


Picture 4

3. Unscrew three screws on the original car board (Picture 5), Install our three copper pillars (Picture 6)



Picture 5



Picture 6

4. Plug in the wiring of adapter board and display screen, Power Wire and VGA Wire (Picture 7), Check and make sure the wiring connected well.

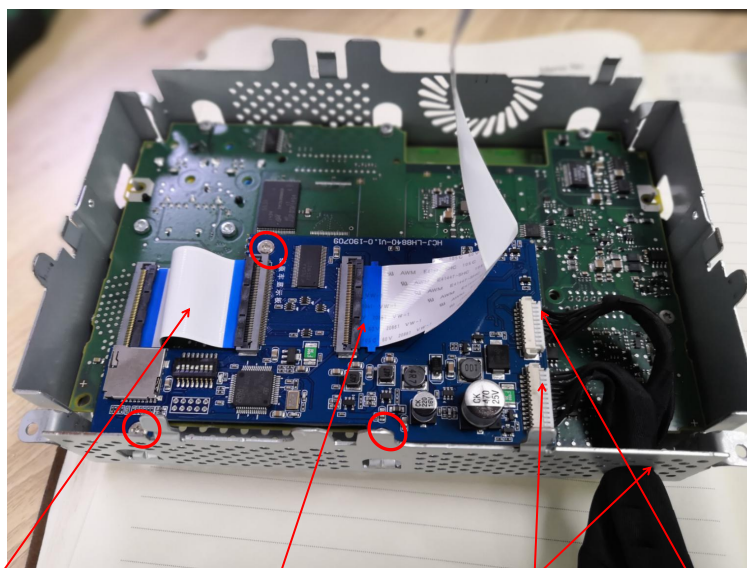


图 7

Insert 50 PIN FPC

The other end of the cable insert to the Original car display screen.

Power supply seat

VGA transponon

The power cord is pierced here

DIP switch setting instruction

Car model/DIP NO.	1	2	3
Bosch 8" American(Range Rover, Evoque)	OFF	OFF	OFF
Bosch 7" (Discovery 4)	ON	OFF	OFF
Bosch 8" Double show one screen	OFF	ON	OFF
Bosch 8" Europe (Range Rover)	ON	ON	OFF
Bosch 8" American(2013 Range Rover)	ON	OFF	ON
Bosch 7" (XF)	OFF	OFF	ON

NO.	DIP	DESCRIPTION
4	ON	Turn off PDC
	OFF	Turn on PDC
5	ON	Turn on FPG
	OFF	Turn off FPG
6	ON	
	OFF	
7	ON	
	OFF	
8	ON	Turn off Rear view
	OFF	Turn on Rear view

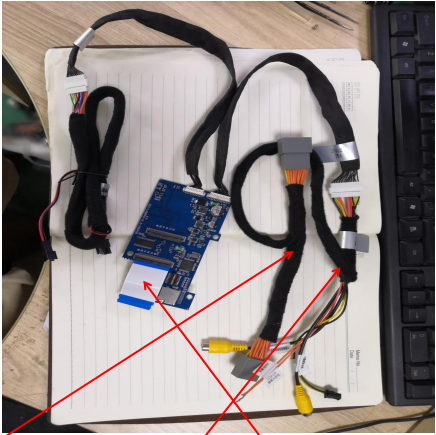
Mode selection/DIP	4	5	6	7	8
AV. 360	OFF	OFF	OFF	OFF	ON
VGA 360 CAN 1	ON	ON	OFF	OFF	ON
VGA 360 CAN 2	ON	ON	OFF	ON	ON

DVR Switching



Long press 2 seconds to enter DVR by "HOME" key

Wiring Diagram



Connect to OEM head unit

Connect to OEM main board

VGA transfer line