



## CTSIV002.2

### Iveco Steering Wheel Control Interface



---

#### Vehicle Application

Iveco Daily 2014>

---

#### Key Features

- Retains Steering Wheel Controls (if equipped)
  - Retains OEM Phone Buttons (if equipped)
- Provides Park Brake, Speed Pulse, Reverse Gear

***www.connects2.com***

Designed and  
Engineered  
in the UK.



*The information provided in this document is subject to change without notice due to changes and/or improvements to the product/s.*

## ABOUT THIS PRODUCT

---

### CTSIV002.2

CAN-Bus Steering Wheel Control Interface for select Iveco vehicles with Mini ISO connector.

### WIRING COLOUR CODES

---

|              |                       |              |               |
|--------------|-----------------------|--------------|---------------|
| Purple       | Right Rear Speaker +  | Yellow       | Permanent 12V |
| Purple/Black | Right Rear Speaker -  | Black        | Ground        |
| Green        | Left Rear Speaker +   | Red          | Ignition 12V  |
| Green/Black  | Left Rear Speaker -   | Pink         | Speed Pulse   |
| Grey         | Right Front Speaker + | Green        | Park Brake    |
| Grey/Black   | Right Front Speaker - | Purple/White | Reverse Gear  |
| White        | Left Front Speaker +  |              |               |
| White/Black  | Left Front Speaker -  |              |               |

### PRIOR TO INSTALLATION

---

*Read the manual prior to installation. Technical knowledge is necessary for installation. The place of installation must be free of moisture and away from heat sources. Please ensure that the correct tools are using during the installation to avoid damage to the vehicle or product. **Connects2 can not be held responsible for the installation of this product.***

### TECHNICAL SUPPORT

---

Connects2 Ltd. want to provide a fast and suitable resolution to any problems encountered during installation of this product. To get in touch with our dedicated technical support team, please fill in a ticket at [support.connects2.com](https://support.connects2.com) and provide as much information as possible.

---

## FOLLOW US ON SOCIAL MEDIA

for all the latest updates



/CONNECTS2  
Watch us on  
YouTube



/CONNECTS2  
Like us on  
facebook



CONNECTS2LTD  
Follow us on  
instagram



@CONNECTS2  
Follow us on  
twitter



CONNECTS2LTD  
Follow us on  
linkedin

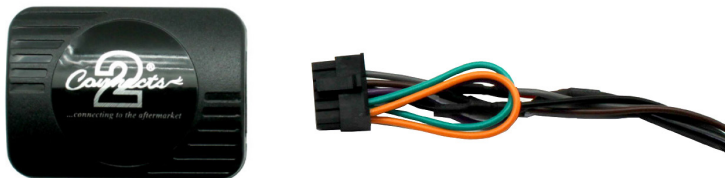


CONNECTS2BLOG.COM  
Follow our blog on  
wordpress

## FITTING GUIDE

---

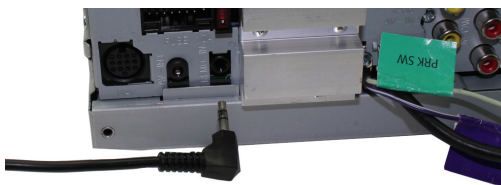
1. Remove and disconnect the original head unit.
2. Connect the 12 way molex connector of the head unit patch lead (supplied separately) to the interface.



3. Connect the opposite end of head unit patch lead to the head unit steering wheel control input on the back of the aftermarket head unit.

NB: This may be a 3.5mm jack plug or a wire input depending upon the head unit brand being fitted. Please see the head unit installation manual for further information on where to connect.

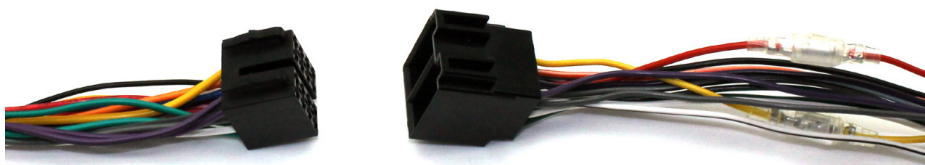
**Important: This step must be completed before connecting power to the interface. Failure to so do may result in no steering wheel control function.**



4. Connect the 14 way molex connector to the interface



5. Connect the male power/speaker ISO harness to the female power/speaker ISO harness from the aftermarket head unit. For aftermarket head units without an ISO connector, please refer to "Wiring Colour Codes" on Pg. 2.



**FITTING GUIDE**

---

6. Connect the female vehicle specific connectors on the harness to the male vehicle connector from the vehicle. Test head unit for correct operation.

**STEERING WHEEL CONTROL FUNCTIONALITY**

---

| Original Button | Function |
|-----------------|----------|
| + Icon          | Volume + |
| - Icon          | Volume - |
| Up Arrow        | Track +  |
| Down Arrow      | Track -  |
| Mute Icon       | Mute     |
| Pick Up Icon    | Pick Up  |
| Hang Up Icon    | Hang Up  |
| SRC             | Source   |