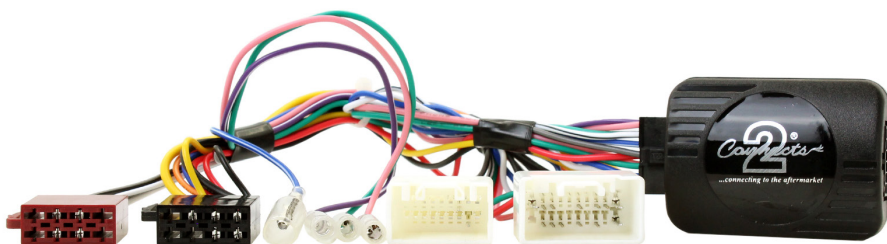




CTSMT002.2

Mitsubishi Steering Wheel Control Interface



Vehicle Application

Mitsubishi Lancer (CYO, Including Sportback) 2007 - 2010
Mitsubishi Outlander (CWB/CWOW) 2007 - 2013
Mitsubishi Outlander Sport 2010>

Key Features

- Retains Steering Wheel Controls (if equipped)
- Allows Access to Installer Settings Menu via SWC
- Provides Park Brake, Speed Pulse, Reverse Gear, Amp Remote & Illumination

www.connects2.com

Designed and
Engineered
in the UK.



The information provided in this document is subject to change without notice due to changes and/or improvements to the product/s.

ABOUT THIS PRODUCT

CTSMT002.2

CAN-Bus Steering Wheel Control Interface for Mitsubishi vehicles with Rockford Fosgate amplified system.

WIRING COLOUR CODES

Purple	Right Rear Speaker +	Yellow	Permanent 12V
Purple/Black	Right Rear Speaker -	Black	Ground
Green	Left Rear Speaker +	Red	Ignition 12V
Green/Black	Left Rear Speaker -	Orange	Illumination
Grey	Right Front Speaker +	Green	Park Brake
Grey/Black	Right Front Speaker -	Pink	Speed Pulse
White	Left Front Speaker +	Purple/White	Reverse Gear
White/Black	Left Front Speaker -	Blue/White	Amp Remote

PRIOR TO INSTALLATION

*Read the manual prior to installation. Technical knowledge is necessary for installation. The place of installation must be free of moisture and away from heat sources. Please ensure that the correct tools are using during the installation to avoid damage to the vehicle or product. **Connects2 can not be held responsible for the installation of this product.***

TECHNICAL SUPPORT

Connects2 Ltd. want to provide a fast and suitable resolution to any problems encountered during installation of this product. To get in touch with our dedicated technical support team, please fill in a ticket at support.connects2.com and provide as much information as possible.

FOLLOW US ON SOCIAL MEDIA

for all the latest updates



/CONNECTS2
Watch us on
YouTube



/CONNECTS2
Like us on
facebook



CONNECTS2LTD
Follow us on
instagram



@CONNECTS2
Follow us on
twitter



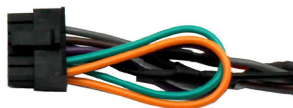
CONNECTS2LTD
Follow us on
linkedin



CONNECTS2BLOG.COM
Follow our blog on
wordpress

FITTING GUIDE

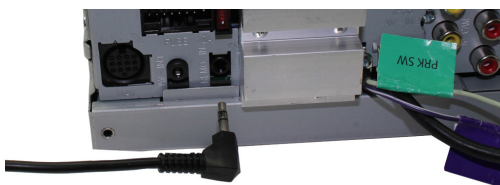
1. Remove and disconnect the original head unit.
2. Connect the 12 way molex connector of the head unit patch lead (supplied separately) to the interface.



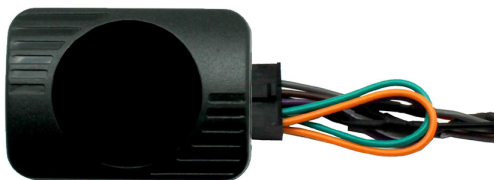
3. Connect the opposite end of head unit patch lead to the head unit steering wheel control input on the back of the aftermarket head unit.

NB: This may be a 3.5mm jack plug or a wire input depending upon the head unit brand being fitted. Please see the head unit installation manual for further information on where to connect.

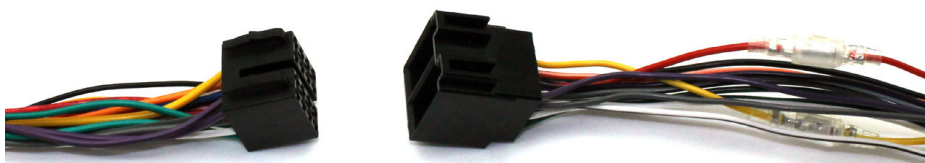
Important: This step must be completed before connecting power to the interface. Failure to do so may result in no steering wheel control function.



4. Connect the 14 way molex connector to the interface



5. Connect the male power/speaker ISO harness to the female power/speaker ISO harness from the aftermarket head unit. For aftermarket head units without an ISO connector, please refer to "Wiring Colour Codes" on Pg. 2.



FITTING GUIDE

6. Connect the female vehicle specific connectors on the harness to the male vehicle connector from the vehicle.

STEERING WHEEL CONTROL FUNCTIONALITY

Original Button	Function
Volume +	Volume +
Volume -	Volume -
Up Arrow	Track +
Down Arrow	Track -
Mode	Source
Pick Up	Pick Up
Hang Up	Hang Up

INSTALLER SETTINGS MENU / SETTINGS MENU

NB: Steering wheel type (old/new) needs to be set using the installer settings menu

Settings Menu

To enter, press and hold 'Mode' for 5 seconds. A beep will sound when Menu Mode is entered. To change values, use 'Track +/Track -'. When in the Settings Menu, short press 'Mode' to move to the next item in the menu, and long press 'Mode' to exit the menu. If no buttons are pressed for 10 seconds, the menu will be exited automatically and 3 low pitched beeps will sound.

Installer Settings Menu

The Installer Settings Menu adds two extra items to the Settings Menu: Amp Gain & Steering Wheel Type

To enter the menu, press Mode and Track + for 5 seconds until the first beep is heard, then release the Mode button whilst keeping the Track + button pressed for a further 5 seconds. Once the menu is enabled, 5 low pitched beeps will sound and 'Track +' can be released.

List of Setting/Installer Menu Items & Corresponding No. of Beeps

- 1 High Pitched Beep - Subwoofer Volume (0-5)
- 2 High Pitched Beeps - Sound Field (Flat, Studio, Club, Concert, DolbyProLogicII). A medium pitched beep is heard when flat is selected.
- 3 High Pitched Beeps - Fader (Front11 - Centre - Rear11) A medium pitched beep is heard when fader is in centre
- 4 High Pitched Beeps - Main volume setting (amp gain). A medium pitched beep is heard when volume is at default value
- 5 High Pitched Beeps - Steering wheel type. 'Track +' selects new type SWC buttons (medium pitched beep). 'Track -' select old SWC buttons (low pitched beep)

Example of Changing the Steering Wheel Control Type from New to Old

Action	Menu	Beep
Hold Mode & Track + for 5 Seconds		1 High
Release Mode, Hold Track + for 5 Seconds	Installer Menu Enabled	5 Low
Short Press Mode	Sound Field	2 High
Short Press Mode	Fader	3 High
Short Press Mode	Main Volume	4 High
Short Press Mode	Steering Wheel Control Type	5 High
Short Press Track -	Select Old	1 Low
Hold Mode for 5 Seconds	Exit Menu	3 Low