

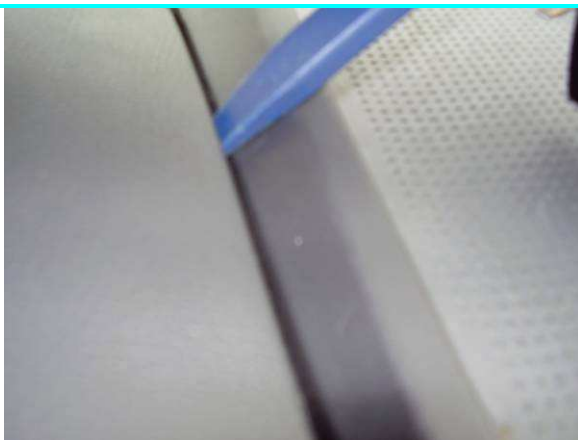
**Caution!**

Due to safety reasons pay attention to the course of existing, also non-visible cables, wires and other components which are situated in the installation area!

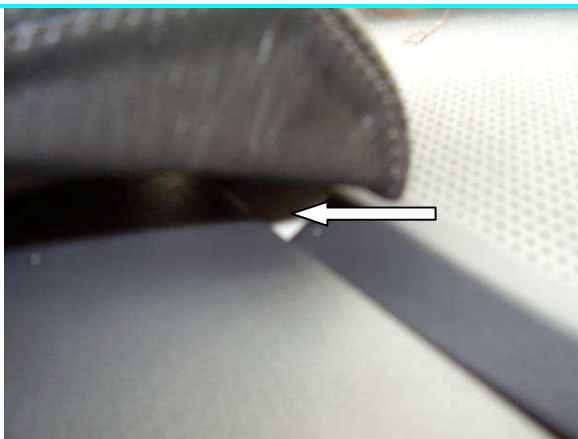
The console and the components are to be installed in such a way that for the passengers no dangers of injury (i.e. by sharp edges) develop.

**Illustration 1:**

- Carefull lift the lining for about 0,5 cm with a flat object.

**Illustration 2:**

- Carefully lift the lining for about 0,5 cm with a flat object.

**Illustration 3:**

- Attach the console as shown so that the front sheet metal of the console (see arrow) is pushed under the lining.

**Illustration 4:**

- Push the front sheet metal of the console (see arrow) under the lining.

**Illustration 5:**

- Replace the lining.